



Down Syndrome Achievement Centers

2025 Impact Report



**THE POWER
OF A PLAYHOUSE**

The 2025 Impact Report provides a comprehensive look back at the impact and progress of GiGi's Playhouse during the 2024 calendar year.

CONTENTS

- 4 Letters From Leadership
- 6 Meet GiGi
- 7 The Power of a Playhouse
- 11 2024 Year in Review
- 16 2024 Programming
- 21 Expanding Access & Volunteers
- 22 Powered by People
- 23 2024 Financial Overview
- 26 Donor & Grantor Recognition
- 28 Corporate Partnerships
- 30 Board of Directors
- 31 Looking Ahead
- 34 Get Involved

OUR PURPOSE

To change the way the world views Down syndrome and to send a global message of acceptance for all.

OUR MISSION

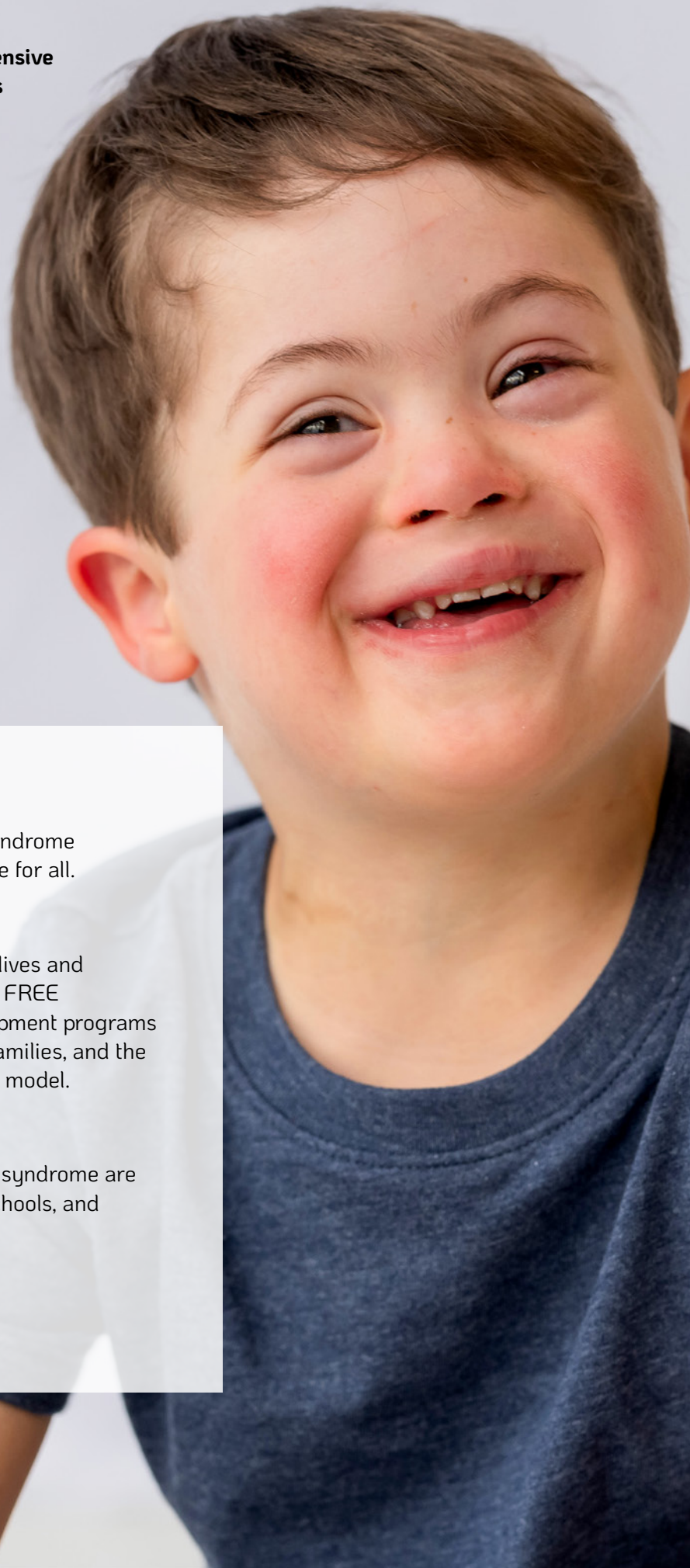
We make a lifetime commitment to change lives and provide hope through consistent delivery of FREE educational, therapeutic, and career development programs for individuals with Down syndrome, their families, and the community, through a replicable playhouse model.

OUR VISION

To see a world where individuals with Down syndrome are accepted and embraced in their families, schools, and communities.

OUR PROMISE

A lifetime commitment to families.



OUR GLOBAL IMPACT

GiGi's Playhouse is the only international network of Down Syndrome Achievement Centers dedicated to providing FREE therapeutic, educational, and career programs for individuals with Down syndrome and their families.

Nancy Gianni, Founder and Chief Belief Officer, opened the first Playhouse in Hoffman Estates, Illinois, in 2003 as a promise to her four-month-old daughter, GiGi — a promise to change the way the world views Down syndrome. That promise has grown into a thriving network of more than 60+ locations across the United States and Mexico. Offering a lifetime commitment to every individual we serve, GiGi's Playhouse provides individuals with Down syndrome the opportunity to maximize their potential to further grow acceptance, inclusion, and empowerment.

Letter from the Founder & Chief Belief Officer **NANCY GIANNI**



Hello, GiGi's family!

Sometimes, I have to pinch myself to believe how far GiGi's Playhouse has come. What started as a promise I made to GiGi when she was 4 months old has transformed into a \$37 million not-for-profit that serves families worldwide with free programs and is truly changing the way the world views Down syndrome. Today, we have opened 61 Playhouses across the U.S. (and even beyond!) — and each one is a beacon of hope in its community.

Through it all, our mission remains at the heart of everything we do. From prenatal diagnosis to career skills, we make a lifetime commitment to our families, ensuring they are never alone on this journey. Walking into a Playhouse, a family finds acceptance, hope, and people who believe in their child's potential — sometimes even before they themselves do. I've met so many parents this year who told me GiGi's was their "lifeline" after a diagnosis, and now their children are thriving in ways they once thought impossible.

Please take a moment to read this Impact Report and celebrate all that YOU have helped make possible in 2024! The stories and successes in these pages are your stories too! Whether you are a volunteer, donor, participant, staff, or supporter, you are a valued part of this amazing GiGi's family that is breaking down barriers and setting new standards of inclusion.

From the bottom of my heart, thank you for standing with us, believing with us, and being the change with us. Together, we are redefining what it means to truly accept and embrace everyone.

With love and gratitude, keep believing and dreaming big with us!

XOXO,

A handwritten signature in black ink that reads "Nancy Gianni".

Nancy Gianni
Founder & Chief Belief Officer (and GiGi's Mom)
GiGi's Playhouse, Inc.

Letter from the CEO **CHRIS BEHRENS**



Dear Valued Supporters,

2024 has been an incredible year of growth and impact for GiGi's Playhouse — and one of personal transition for me. I began the year serving on the Executive Board of GiGi's, and in the fourth quarter, I had the honor of stepping into the role of CEO. From both vantage points, I've had the privilege of witnessing the passion, perseverance, and purpose that fuel this organization every single day.

I am proud to share that we provided over 340,000 hours of FREE therapeutic and educational programming in 2024. Every one of those hours represents opportunities — a child learning to read, a teen building confidence, an adult mastering a life skill — all offered at no cost to families. This remarkable achievement was only possible because of generous donors and thousands of volunteers who gave their time and talent. Together, we are changing lives daily.

Our network also grew in scope and quality. We celebrated the opening of three new Playhouses (bringing us to 61 Playhouse locations), introduced

programs in new languages, and enhanced our virtual offerings. To keep pace with this growth, we focused on strengthening our infrastructure — from volunteer training to program development — ensuring we maintain the highest standards of program excellence as we expand.

None of this would be possible without the unwavering support of people like you. Thank you for believing in our mission and for helping make 2024 a year of real change and hope. I am continually inspired by the stories of achievement and perseverance that come out of each Playhouse. As we look ahead, I am more confident than ever that, with your support, we will continue to break barriers and achieve the "unimaginable" together.

Thank you!

A handwritten signature in black ink that reads "Chris Behrens".

Chris Behrens
Chief Executive Officer
GiGi's Playhouse, Inc.

Meet Our Chief Inspiration Officer **GIGI GIANNI**



GiGi Gianni has been inspiring others since her birth in 2002. Born with Down syndrome, GiGi is the namesake and Chief Inspiration Officer of GiGi's Playhouse. Her life and work embody our purpose: to change the way the world views Down syndrome and to send a global message of acceptance for all.

A Life of Impact

GiGi is a motivational speaker, advocate, author, and accomplished singer who has performed the National Anthem at major events including Chicago Cubs games and national concerts.

GiGi also co-hosts A Little Something Extra, the first video podcast of its kind led by an individual with Down syndrome.

Presence and Purpose

GiGi's influence extends beyond the stage or studio. She travels to every GiGi's Playhouse location across the country, attending Playhouse Grand Openings, major events, and meeting families, volunteers, and supporters.

Her presence at these milestones brings our mission to life, showing the world what's possible when individuals with Down syndrome are seen for their strengths, not their diagnosis.



THE POWER OF A PLAYHOUSE



WHEN SUPPORT DIDN'T EXIST, THEY BUILT IT

RECEIVING THE DIAGNOSIS

Justine needed support. On August 11, 2020, she gave birth to her daughter Penny, who was diagnosed with Down syndrome. Like many parents, Justine was overwhelmed, grappling with what the diagnosis meant for her, her daughter, and their future.

"I was petrified when I got my daughter's diagnosis. I was angry; I grieved. I went to the extreme worst of everything," Justine said. "That's when I knew I needed to find that support."

Just one day after Penny's birth, Justine called a local organization hoping to find that support. That call was never returned. In fact, she's technically still waiting.

But Justine didn't stop looking.



“I wanted to meet moms of older kids. I needed to see what life looked like years down the road,” she said. “I wanted to know I was going to be okay.”

Her search led her to a Facebook group of local parents of children with Down syndrome. They were working to bring an organization to town that would provide free, life-changing programming for individuals with Down syndrome and their families. That organization was GiGi’s Playhouse.

Justine decided to attend a local event the group was hosting, called the GiGiFIT Acceptance Challenge. For the first time, she felt the connection she had been looking for. Strangers

congratulated her on Penny’s birth. **People saw her daughter as a joy, not a diagnosis.**

“Both my husband and my hearts were filled,” she said. “We got in the car, and he looked at me and said, ‘You’re going to be a part of this, aren’t you?’

She was.

Just one week later, Justine emailed the startup team. She wanted in.

BUILDING THE DREAM

Determined to bring a GiGi’s Playhouse to her community, Justine joined the startup team as its lead. It was no small task; it required raising awareness, rallying support, and securing

funding. Along the way, Justine had moments where she questioned just how feasible this undertaking was.

The next year, the startup team hosted another GiGiFIT Acceptance Challenge, this time focused on fundraising. For Justine, it would be the moment of truth.

Over 300 people showed up to the event, raising over \$40,000.

That’s when it became clear to Justine: the entire community needed GiGi’s.

“Selfishly, I started it for my daughter Penny,” Justine said. “But once meeting our community, I knew our community needed this.”

Support kept growing in surprising ways. When Justine and the team were searching for a location, a landlord named Alex asked what the space was for. When she explained it would be a Down Syndrome Achievement Center, he donated the entire build-out — with no personal connection to the cause.

“In a world that I’m so petrified for my daughter to be in, there are still amazing people like Alex,” she said.

In March 2024, after years of hard work, the Playhouse officially opened. More than 500 people came to celebrate what their community had built...together.

THE REAL BEGINNING

When the Playhouse opened, it wasn’t the end; it was just the beginning.

The demand was particularly clear among adults with Down syndrome, a group often left behind after childhood. In this community, as in many others, state-funded early intervention services stop at age three. After that, families are left to navigate a confusing and limited system of support.

“As nice as those services were, they’re gone,” said one local mom. “But my son still needs help. And GiGi’s won’t go away; not when he’s 5, or 15, or 10.”

Immediately, the need for GiGi’s services revealed itself. The very first program offered was a GiGiFIT Adult class. It filled instantly.

But GiGi’s lifetime commitment was not just reflected in the adult programming; it was embodied through the adult participants themselves.

Justine and the Playhouse team reached out to the mother of David, a local 59-year-old man with Down syndrome experiencing early-onset dementia, a condition that affects many adults in the Down syndrome community.

His mother wasn’t sure he’d be able to attend the Playhouse, but Justine assured her: he belongs here.

“Seeing David walk in, shake my hand, and smile,” Justine said, “I knew, I’m going to be okay. My family is going to be okay.”



For many, that's what GiGi's represents: certainty in a world of unknowns.

“Every other service has an end date,” said one parent. “With GiGi’s, it doesn’t.”

And now, families who once feared the diagnosis can rest a little easier. Justine included. The fear she felt when Penny was first born has been replaced with something else: peace.

“To know that my child and others like her have a place where they’re accepted — where they can unapologetically be themselves,” Justine said, “we’re able to go home and lay our heads down at night with a smile on our face, knowing that she’s going to be fine.”

ONE STORY, 61+ PLAYHOUSES STRONG

Justine’s story, and the Playhouse she and her community helped open, unfolded in Las Vegas, Nevada, but it could have happened anywhere. That’s the power of GiGi’s Playhouse.

Since founder Nancy Gianni opened the first Playhouse in 2003, the mission has remained the same: to make a lifetime commitment to changing lives and provide hope through



consistent delivery of free educational, therapeutic, and career development programs for individuals with Down syndrome, their families, and the community.

What began with one location in Illinois has grown into a replicable and sustainable business model of more than 61 Playhouses across the U.S. and Mexico, each fueled by passionate volunteers, generous donors, and courageous families like Justine’s.

The Las Vegas Playhouse is proof of what’s possible when passion is backed by community, a business model, and a mission.



2024 YEAR IN REVIEW

Defined by Growth, Achievement, and Impact

GROWTH IN LOCATIONS

We expanded our reach by opening new Playhouses in Las Vegas, Simi Valley, and Portland, and launched the beta version of the GiGi’s Virtual Programming Platform to further extend our impact.

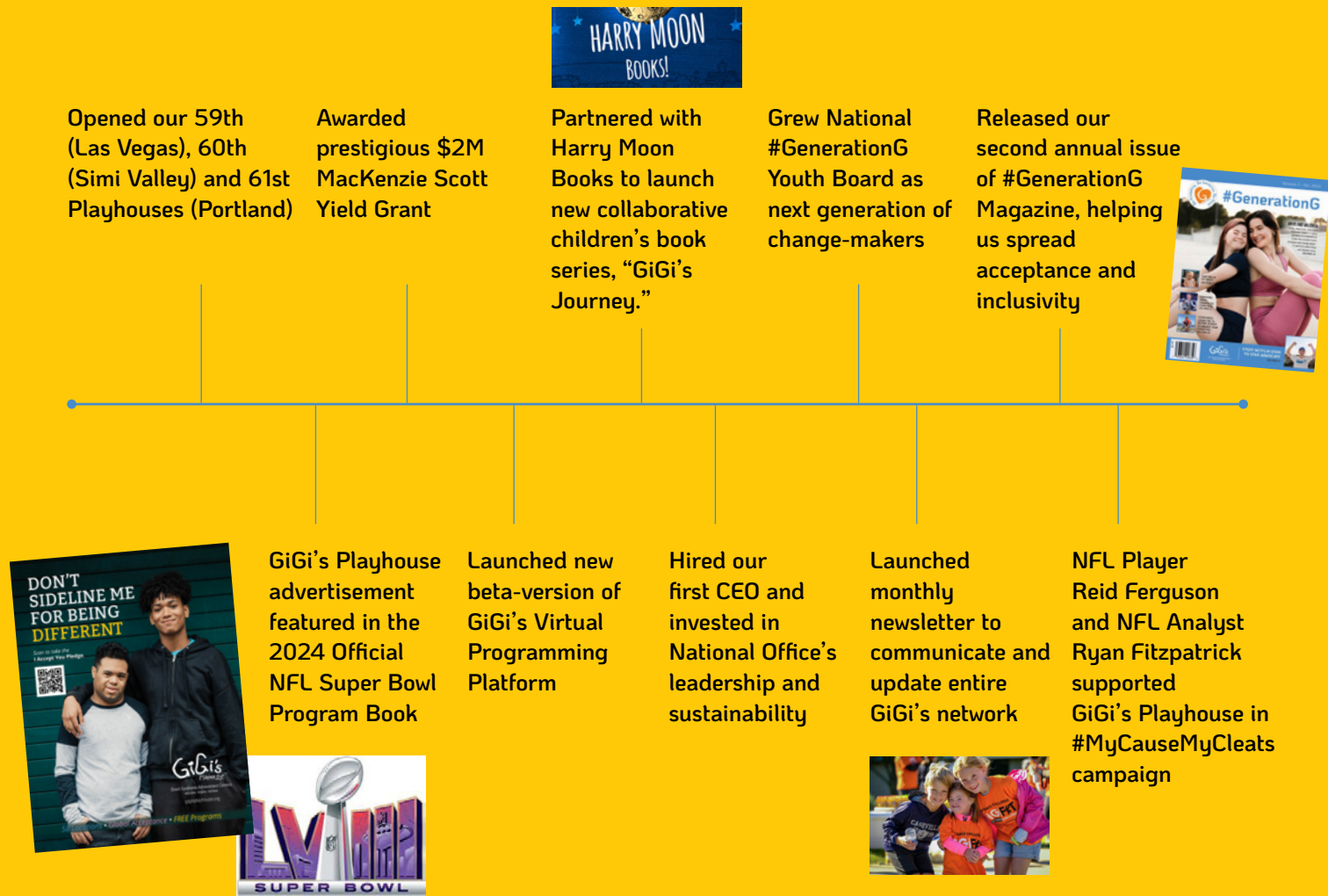
GROWTH IN PROGRAMMING

We provided 340,000+ hours of free programming over the course of the year — a 21% increase over 2023 — and welcomed an average of 300 new families each month into the GiGi’s Playhouse network.

GROWTH IN LEADERSHIP

2024 marked a significant milestone with the hiring of our first Chief Executive Officer, Chris Behrens, made possible by the Yield Giving grant from MacKenzie Scott. We also strengthened the National Office by investing in leadership development and long-term sustainability.

ACHIEVEMENTS IN 2024



PLAYHOUSE OPENINGS IN 2024



LAS VEGAS, NV PLAYHOUSE #59

In March, we opened GiGi's Playhouse Las Vegas, our first Playhouse in Nevada!



SIMI VALLEY, CA PLAYHOUSE #60

In August, our 60th Playhouse officially opened its doors: GiGi's Playhouse Simi Valley!



PORTLAND, OR PLAYHOUSE #61

In September, we celebrated our final opening of the year, and our first in Oregon, with GiGi's Playhouse Portland!

PLAYHOUSES ON THE HORIZON

In addition to opening three Playhouses in 2024, we're excited to have startup locations forming in several cities, expanding our reach even further. These startup Playhouses include:

CHARLESTON, SC (OPENING 2025)
COLORADO SPRINGS, CO
KNOXVILLE, TN
SALT LAKE CITY, UT

GIGI'S PLAYHOUSE IMPACT IN 2024



340,000

hours of FREE programming

5,620

hours of FREE programming each week



31,000+

families served

300

new families join GiGi's Playhouse every month



66

Playhouse locations opened, plus start-ups



93

countries served virtually

6

Continents where individuals with Down syndrome receive our 1:1 tutoring



99%

volunteer run

200,000+

volunteer hours



50%

of all program hours dedicated to adult programming

KEY PARTNERSHIPS IN 2024



BEYOND THE PLAYHOUSE: AWARENESS. ADVOCACY. ACTION.

In 2024, GiGi's Playhouse went beyond free programming — we shifted mindsets, shaped culture, and drove acceptance across the globe.

SOCIAL MEDIA REACH

50M+ Impressions

2.3M+ Engagements

740K+ Followers

14% Growth in Followers

DIGITAL REACH VIA WEBSITE

2.6M Pageviews

+16% Organic Pageviews YOY

760K Total Users

50K Pageviews Per Week

STORYTELLING WITH PURPOSE

Hosted by Nancy, GiGi, and Franco Gianni, *A Little Something Extra* spotlights celebrities, advocates, entrepreneurs, and everyday heroes who are redefining what's possible.



ADVOCACY IN ACTION

In 2024, we recognized #GenerationG Heroes — individuals and organizations driving real change and acceptance in their communities.

Tampa Bay Buccaneers players Dee Delaney and Deven Thompkins were recognized as proud fathers of children with Down syndrome using their platforms to champion awareness and acceptance.

Cardinal O'Hara High School — the first high school to win our #GenerationG Hero Award — for their inclusive St. Margaret's Scholar Program, which pairs students with disabilities with peer mentors to support academic and social success.



At GiGi's, advocacy means action — online, on air, and in communities.



2024 PROGRAMMING

Virtual, Signature, and Career Programs

GIGI'S VIRTUAL PROGRAMS

In 2024, we launched our new and updated virtual programming platform. This innovative platform is allowing us to expand our reach. Thanks to our new virtual platform, our free programs are in underserved communities throughout the U.S., as well as 93 countries! In fact, our 1:1 tutoring programs are now reaching six continents! Through our virtual programming platform, families across the world can access:

1:1 Programs

Live Programs

On-Demand Programs



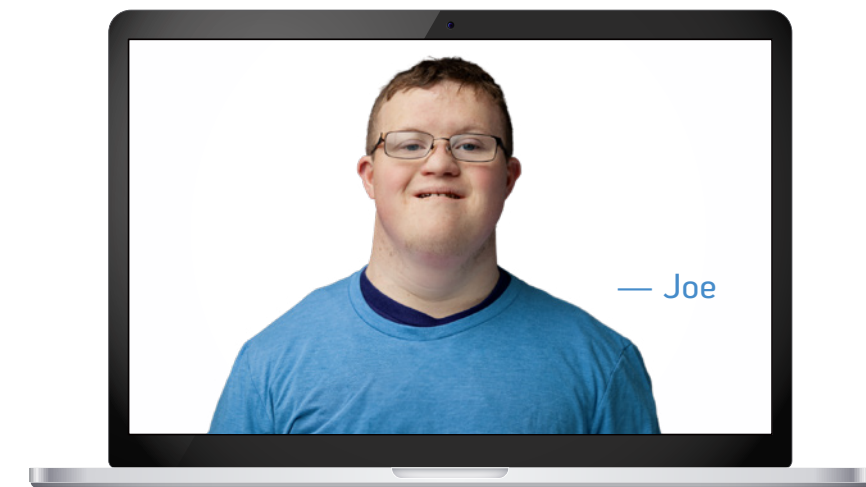
VIRTUAL SUPPORT, REAL IMPACT

Joe had lost his passion for reading. Like many individuals with Down syndrome, negative experiences in school had shaken his confidence. Then he enrolled in one-on-one tutoring through GiGi's Playhouse Virtual Programs, and everything changed.

“The truth is, GiGi’s made Joe love reading again,” said Joe’s mother. “He becomes more alive, creative, and expressive.”

But Joe’s progress didn’t stop there; he was accepted to Bowling Green State University Firelands campus, a dream come true for his whole family.

“I really believe GiGi’s made all the difference in Joe’s life. Our lives are much richer because of the teamwork GiGi’s has...just knowing that the tutors exist warms our hearts and gives us hope that our kids will be included and welcome out in the world even when it’s not family.”



GIGI'S SIGNATURE PROGRAMS

At GiGi's Playhouse, our FREE Programs are deliberately holistic — spanning therapeutic, educational, social, and career development needs — and are all backed by research-based curricula tailored for individuals with Down syndrome.

AMINA GRACE ONE-ON-ONE SPEECH & LANGUAGE PROGRAM

(All Ages)

Provides specialized instruction to strengthen articulation, speech clarity, expressive and receptive language, and social communication skills. Sessions focus on building oral motor strength, increasing vocabulary, improving sentence structure, and enhancing conversational skills through engaging, multi-sensory activities. The program empowers participants to develop stronger communication skills for real-world interactions.

ART EXPLOSION (All Ages)

Supports the growth of key developmental skills by providing a hands-on exploration of diverse art media, fostering self-expression, building confidence and social skills, as well as fine and gross motor skills.

DESTINATION DISCOVERY (All Ages)

Creates a sensory-rich environment where participants engage in fun, structured play that promotes gross motor development, fine motor skills, social interaction, and cognitive skills.

FANTASTIC FRIENDS (Ages 18+)

Facilitates social interactions between adults with Down syndrome, their peers, and the community. Supports the development of social skills and language through peer-to-peer interaction in a fun, casual setting.



GIGIFIT (All Ages)

A physical therapy-based program series that uses evidence-based techniques to improve strength, endurance, joint stability, balance, and movement control. Designed for individuals with Down syndrome of all ages.

GIGI'S DANCE (Ages 5 - Adult)

Introduces basic dance styles, techniques, and movements while improving gross motor skills, mental and muscle memory, and cardiovascular conditioning. The program also enhances strength, flexibility, and coordination.



GIGI'S KITCHEN (Ages 6 - Adult)

Teaches practical cooking skills and educates participants on the importance of nutrition for lifelong health. Designed for kids, teens, and adults, the curriculum focuses on preparing balanced, nutrient-rich meals that support brain function, cardiovascular health, and overall wellness.

KIDS CLUB (Ages 8 - 12)

Supports the development of social skills and language through peer-to-peer interaction in a casual and fun setting. This program also supports gross motor skills through active games, fine motor and self-help skills through meal/snack preparation and activities.

LEAPS & BOUNDS (Ages 3 - 5)

Promotes the development of social, emotional, and motor skills through structured play and engaging group activities. This program supports early childhood growth in a fun, purposeful environment.

LMNOP (Ages 0 - 36 months)

Introduces and strengthens communication skills through music, movement, and sign language. The program guides infants and toddlers and their parents through basic sign language and language development using music and play. LMNOP makes language development fun and accessible, setting a strong foundation for future speech and communication skills.

MUSIC MAKERS (Ages 5 - Adult)

Builds self-confidence, enhances social and communication skills, and strengthens motor development through the therapeutic use of music and instruments. This engaging program supports learning and growth for individuals from school age through adulthood.

ONE-ON-ONE LITERACY PROGRAM (Ages 3 - Adult)

Tailors individualized lessons to each learner's ability level, using research-based strategies like sight word recognition, phonics, guided reading, and storytelling. This approach enhances comprehension, improves articulation, and fosters a love for reading.

ONE-ON-ONE MATH PROGRAM (Ages 3 - Adult)

Provides personalized instruction in number recognition, counting, basic operations, time management, money concepts, and functional math skills tailored to real-life applications. The program fosters confidence in numerical reasoning and practical math application, empowering participants to use math in daily situations, such as shopping, budgeting, and time management.

PLAYHOUSE PALS (Ages 5 - 8)

Supports the development of social skills and language through peer-to-peer interaction in a casual and fun setting. This program also supports gross motor skills through active games, as well as fine motor skills and self-help skills.

GIGI'S CAREER PROGRAMS

Adults with Down syndrome are living longer than ever, and they deserve opportunities that grow with them. We're expanding our career programming to meet the evolving needs of this thriving population through progressive, multi-tiered support that empowers lasting independence.

GIGI PREP (Ages 18+)

Focuses on foundational career readiness, teaching essential soft skills such as communication, time management, and teamwork. Participants engage in interactive workshops and activities that help build confidence and prepare them for entry-level employment opportunities.



GIGI U (Ages 18+)

Builds upon foundational skills, offering advanced instruction in workplace etiquette, customer service, and task management. The program emphasizes leadership development and goal setting, empowering participants to take ownership of their career paths.



GIGI PROFESSIONAL (Ages 18+)

Provides the final step in the career development journey, connecting participants with real-world internship opportunities and supporting their transition to paid employment in community-based settings. This program partners with businesses and community organizations to foster inclusive hiring practices and ensure participants are placed in integrated, competitive jobs that match their skills and interests.

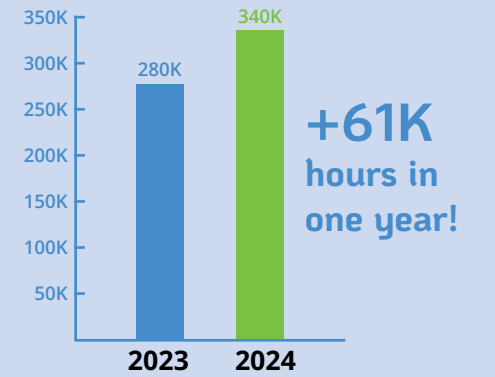


EXPANDING ACCESS IN 2024

In 2024, GiGi's Playhouse delivered more than **340,000 hours of free programming**, up from **280,000 hours in 2023**. That's a 21 percent increase in life-changing impact, made possible by our community of volunteers, donors, and families!

From one-on-one tutoring to career training, fitness, and life skills programs, each hour represents opportunity, connection, and inclusion for individuals with Down syndrome across the country.

Program Hours Growth



MEETING THE NEEDS OF A GROWING ADULT POPULATION

Half of all program hours in 2024 served adults with Down syndrome.

People with Down syndrome are living longer, but many face serious health and independence challenges:

- Over 90% will develop Alzheimer's
- 70%+ are overweight or obese
- Up to 400% higher risk of diabetes
- Increased risk of falls, hospitalization, and regression

Despite these challenges, there is limited long-term support tailored to adults with Down syndrome.

At GiGi's Playhouse, we're changing that. We're expanding adult-focused programs that promote movement, nutrition, community, and lifelong learning because growing older should come with dignity and opportunity.

Lifelong support. Lifelong potential.



ACCESSIBLE TO ALL, TRANSFORMATIONAL FOR ARI

Ari had a tough time in school, often misunderstood by teachers and labeled as unfocused. But when Ari enrolled in the free one-on-one literacy tutoring program at GiGi's Playhouse, her energy wasn't a problem; it was a key. Her Literacy Tutor, Holly, embraced Ari's unique learning style with creative, movement-based lessons that helped her stay engaged, make real progress, and unlock her potential.

"Ari loves letters, knows each letter's sound, and is starting to read independently," her mom shared. "I believe it's because of the lasting, loving impact Holly made."

POWERED BY PEOPLE

In 2024, over 200,000 volunteer hours powered 340,000 hours of FREE programming across the GiGi's Playhouse network. From tutoring to program leads and everything in between, our volunteers made it all possible.

VOLUNTEER HIGHLIGHTS



Cindy Marie Judy

An outstanding 1:1 virtual tutor whose impact spans years and borders, was awarded our **Lifetime Achievement Award!**



Sally Marquis

A beloved volunteer at our Hugs + Mugs Café in the National Playhouse, was awarded our **National Volunteer of the Year Award!**

THE NEXT GENERATION OF CHANGE

Our #GenerationG Youth Boards are groups of high school volunteers passionate about inclusion and advocacy for individuals with Down syndrome. They volunteer at local Playhouses, lead events, and promote acceptance in their schools and communities.

In 2024, seven Playhouses united for our first National #GenerationG Youth Board Forum to build a model for expanding youth involvement across GiGi's. At our Annual Leadership Conference, we honored members of the National Youth Board with the #GenerationG Award.

They're not just the future of GiGi's; they're helping build it.



2024 FINANCIAL OVERVIEW

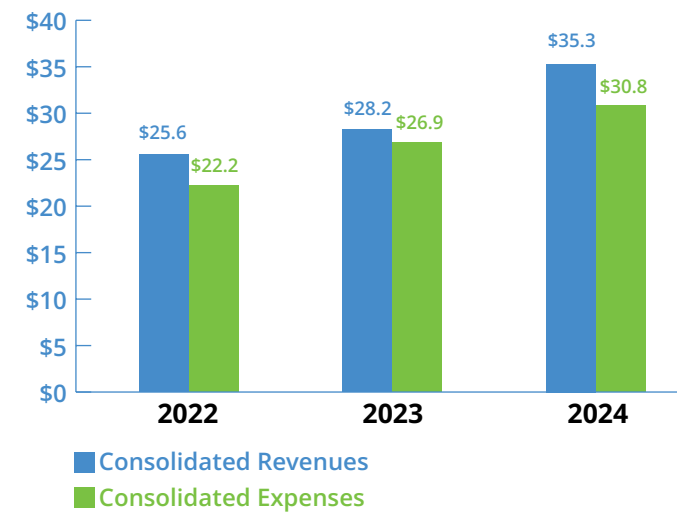
Financials, Donors & Grantors, Corporate Partnerships, and Our Board

FINANCIAL HIGHLIGHTS

In 2024, thanks to strong community support, careful budgeting, and successful fundraising events, GiGi's Playhouse, Inc. remained on solid financial footing while expanding our services to more families than ever. We sustained a network-wide budget of \$35.3 million, enabling free, high-impact programming at every Playhouse location. With less than 10% of expenses allocated to general and administrative costs, our resources go directly to the communities we serve, ensuring we create meaningful impact.

3-Year Consolidated Revenue and Expenses*

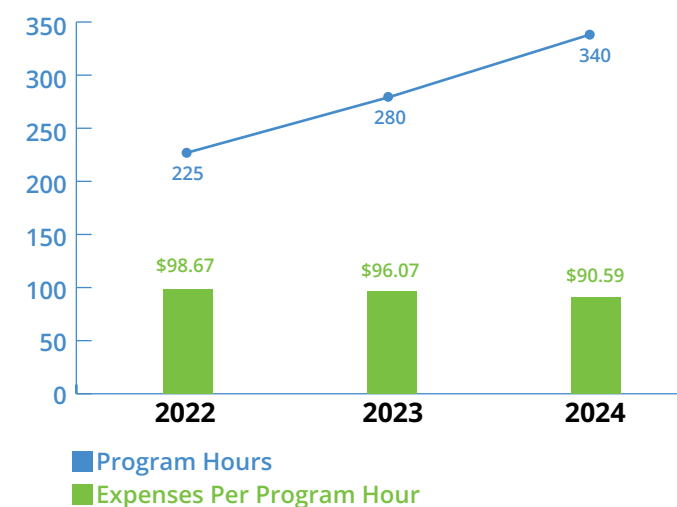
Dollars in Millions



*does not include NMS, National Mission Support

3-Year Growth in Programs and Efficiencies

Program Hours in Thousands



STEADY GROWTH, MISSION-DRIVEN MOMENTUM

Over the past three years, GiGi's Playhouse has consistently exceeded revenue projections while carefully managing expenses — demonstrating strong financial stewardship and sustainable growth. This positive trajectory ensures we can continue expanding free, life-changing programs for individuals with Down syndrome.

GROWING IMPACT, LOWER COST

As GiGi's Playhouse expands and delivers more program hours, our cost per program hour continues to decrease — proving that growth isn't just about doing more, it's about doing it more efficiently.

2024 FINANCIAL RESULTS

GiGi's Playhouse, Inc.
Consolidated Statement of Activities and Changes in Net Assets
Years Ended December 31, 2024 and 2023

	2024			2023		
	Without Donor Restrictions	With Donor Restrictions	Total	Without Donor Restrictions	With Donor Restrictions	Total
Revenue, Gains, and Other Support						
Contributions	\$8,580,680	\$169,239	\$8,749,919	\$7,139,472	\$382,724	\$7,522,196
Grants	3,139,203	2,517,769	5,656,972	745,249	1,714,745	2,459,994
Merchandise Income	117,224		117,224	125,731		125,731
Contributed nonfinancial assets	5,761,529		5,761,529	4,601,600		4,601,600
Special event revenue:						
Gross revenue	13,164,401	50,132	13,214,533	11,943,394		11,943,394
Special event contributed nonfinancial assets	1,206,691		1,206,691	1,138,042		1,138,042
Investment return — Net	540,639		540,639	339,728		339,728
Miscellaneous revenue	40,604		40,604	86,398		86,398
Net assets released from restrictions	2,054,982	(2,054,982)	-	2,112,511	(2,112,511)	-
Total revenue, gains, and other support	\$34,605,953	\$682,158	\$35,288,111	\$28,232,125	\$(15,042)	\$28,217,083
Expenses						
Program Services	23,254,476		23,254,476	20,251,596		20,251,596
Support services:						
General and administrative	1,529,621		1,529,621	1,272,469		1,272,469
Fundraising	6,016,838		6,016,838	5,365,732		5,365,732
Total expenses	30,800,935	-	30,800,935	26,889,797	-	26,889,797
Increase (Decrease) in Net Assets	3,805,018	682,158	4,487,176	1,342,328	(15,042)	1,327,286
Net Assets — Beginning of year	16,801,760	3,100,002	19,901,762	15,459,432	3,115,044	18,574,476
Net Asset — End of year	\$20,606,778	\$3,782,160	\$24,388,938	\$16,801,760	\$3,100,002	\$19,901,762

RECOGNITION OF MAJOR DONORS AND GRANTORS

Our impact is made possible by the generous donors, supporters, organizations, and grantors who believe in our mission and partner with us to change lives. In addition to the generous supporters listed, GiGi's Playhouse is fortunate to receive funding from anonymous grantors. Though their names are not shared, their impact is profound, and we are deeply grateful for their support.

DONORS & SUPPORTERS

Corporate Gifts

Accurate Personnel
ADMO, Inc
Arby's Foundation
Barrington Bank
Beazer Charity Foundation
Caterpillar
Comprehensive Marketing Inc
Caruso Development Corporation
Comprehensive Marketing
Custom Blending solutions
Custom Promos.com
City Wide Facility Solutions
Diamonds Direct
Diamond Rigging
DICK's Sporting Goods Foundation
Fellowes, Inc
HYROX
Industrial Source Incorporate
Lakeshore Financial Group
Lamp Incorporated
Liv Edge Capital

McMahon Services
Muir Insurance Group
M.J. Miller & Co.
Rahl Jewelers
Real Estate Boxing
Rock Fusco & Connelly, LLC
SAP
Sargento
School Specialty
Sunbelt Rentals
Steak 48
The LAT Group
Wintrust Bank
Wi-Tronix
Woolx Merino
2000 PercentRaise

Individual Gifts

Foglia Family
Mary LaRocque
Kim Duchossois
Barsumian Family
Rios/Migliore Family
Dinverno Family
Bowerman Family
Riley Family
Khoshabe Family
Lauderback Family

GRANTORS

Alan Barsumian Trust
Amina Grace Memorial Fund
A. Montgomery Ward Foundation
Deschouw BSM LLC
Dr. Scholl Foundation
DS Chicagoland Buddy Walk
Edandor Foundation
Fidelity Charitable
Full Circle Foundation
Hanover Township
Industrial Source
Levitetz Family Foundation
MacKenzie Scott's Yield Giving
Oberweiler
Red Hat Charitable Giving Fund
Rice Foundation
Stacy Ann Baker Charitable Fund
The Benevity Community Impact Fund
The Coleman Foundation
The Knowles Foundation
Thunder Cares
Truist Foundation
Turano Foundation
Wasily Family Foundation
Westlake Health Foundation
Wintrust Financial Corporation

- Cash Donation
- Stock or Asset Donation
- Gala Table Lead or Event Sponsorship
- Auction Item or Experience Donation (for Gala, 5K, or Golf events)
- Volunteer Time or Expertise

MORE WAYS TO GIVE

Your generosity fuels our mission, and there are many meaningful ways to make an impact. Every form of support helps GiGi's Playhouse provide free, life-changing programs and expand acceptance for individuals with Down syndrome.



RECOGNITION OF NETWORK DONORS AND SUPPORTERS



Corporate Gifts

Alerus Mortgage
Alliance Door & Hardware INC
American Equity Life Insurance Company
American International Group Inc. (AIG)
AmeriHealth
Ameriprise Financial
Aulet Capital Partners, L.P.
Anfora Fashion Group, INC
Appalachian Field Service
Aristocrat
Ascendium Education Solutions, Inc
AstraZeneca
AT&T
Bank of America Charitable Fund
Beef-a-Roo
Benevity
Better Learning Therapies
Beyond Limits Running
Bonterra Tech
Broders Restaurants
Burns & McDonnell
Charles Schwab
Chicago Trading Company
City Wide Franchise Company, Inc
CNY Mortgage Bankers Association INC
Connexus Credit Union
DIMarco Group
Down Syndrome Association of Miami
Edison National bank
Embold Credit Union
Fidelity Investments
FM Area Foundation
Garvin Exteriors
General Donations Rockford
Guardian Service Industries, Inc.
Hanks Clothing For Men & Women Inc
Hartz Physical Therapy
Highmark Western and Northeastern New York Inc
Home Team Iowa
Huntington Bank
Interblock, Luxury Gaming Products
IREM - Greater New York Chapter
Jabil Cares Foundation, Inc.
Jackson Healthcare Charities
Jupiter Pizza and Waffle Company
KeyBank Foundation
Lamb Foundation of NC, INC.
Liberty Oilfield Services
LKQ Corporation
Mathews Auto Group, Inc.
McAlister's Deli
Metafrío Solutions, Inc
Miami Valley Gaming
Morgan Stanley
Morgan Stanley GIFT
National Christian Foundation Carolinas
New York Yankees Tampa Foundation
Omron Foundation, Inc
Only in Wisconsin Giving, Inc
Optum Services Inc.
Price Waterhouse Cooper
PWC Price Waterhouse Cooper
Raleigh Wealth Solutions
Raley's
RBC Capital Markets
Riley Contracting Group, Inc.
Rohrer's Inc
Saint Paul and Minnesota Foundation
Smurfit WestRock
Societe Generale
Sprouts Farmers Market
State of New York

Twin Cities
Rochester
Des Moines
New York
Lancaster
Rochester
Nashville
New York
Canton
Las Vegas
Madison
Orange County
El Paso
Simi Valley
Rockford
New York
Salt Lake City
Las Vegas
Lancaster
Twin Cities
Canton
Houston
Chicago
Charleston
Syracuse
Wausau
Rochester
Miami
Fort Myers
Portland
Twin Cities
Fargo
Houston
Rockford
New York
Southern Tier
Lancaster

Buffalo
Des Moines
Detroit
Las Vegas
New York
Tampa
Atlanta
Sugar Land
Syracuse
Charlotte
Houston
Nashville
Southern Tier
Atlanta
Atlanta
Cincinnati
Atlanta
Atlanta
Charlotte
Tampa
Queretaro, Mexico
Madison
Twin Cities
Houston
Atlanta
Raleigh
Sacramento
New York
Raleigh
Lancaster
Twin Cities
Atlanta
New York
Orange County
New York

Steel Dynamics, Inc.
Steve Dimopoulos Law Firm
Subaru of America
Suffolk County Youth Bureau
Sutter Health Sutter Valley Hospitals
TAGNY USA CORP
Tamir Enterprises (Clover's Bar and Grill)
Tampa Electric Company
The Coca-Cola Company
The Junior League of Houston, Inc
Thrive Gym LLC
Thrivent Financial
Tito's Handmade Vodka
Topaz Consulting, LLC
Truist Financial Corporation
UBS Financial Services
Uncommon Retail
Ven Johnson Law Firm
Visions Federal Credit Union:
Information Technology Center
Walmart
White Castle
Wright Construction Group, Inc
Yardi Systems Inc
Ye Loyal Krewe of Grace O'Malley

Foundation Gifts

Agee Family Foundation
American Online Giving Foundation
American Online Giving Foundation Inc.
Amina Grace Memorial Fund
Amina Grace Memorial Fund
Arby's Foundation
Arrillaga Foundation
Assistance League of Laguna Beach
AWS Foundation Inc.
B. Thomas Golisano Foundation
B. Thomas Golisano Foundation
B.A. & Esther Greenheck Foundation
Bader Philanthropies, Inc.
Baxley Foundation
BCBSND Caring Foundation
Beazer Charity Foundation
Benevity Fund
Blazer Foundation
Bliss Family Fund
Canarelli Family Foundation
Carly May Foundation
Carolina Hurricanes Foundation Inc.
Charles D. and Mary A. Bauer Foundation
Charles Schwab
Charlie Tippmann Foundation
Charitable Trust
Chemed Foundation
Chur Family Foundation
Church of Jesus Christ of Latter Day Saints
Clark Association
Cooper Family Charitable Fund
Crescent City Classic Foundation
Daniel and Julie Hartung Charitable Foundation Inc.
David Weekley CARE Fund
Edmond and Alice Opler Foundation
Edna K. Miller Foundation
Electrical Terminal Service, Inc.
Elizabeth S & Henry M Peters Jr. Fund
Fidelity Charitable
Florida Farm Bureau Women's Fund
Fort Bend Junior Service League
Foundation for Developmental Disabilities
Fred and Mabel R. Parks Foundation
Fred R Sacher Foundation
FS Foundation
Future Keys Foundation
GECU Foundation

Fort Wayne
Las Vegas
Wausau
Long Island
Sacramento
Long Island
Tinley Park
Tampa
Atlanta
Houston
Annapolis
Madison
Madison
McHenry County
Atlanta
Syracuse
Twin Cities
Detroit

Southern Tier
Fort Myers
Tinley Park
Fort Myers
Cleveland
Tampa

Sugar Land
Las Vegas
Twin Cities
Madison
Annapolis
Fort Wayne
New York
Orange County
Fort Wayne
Buffalo
Rochester
Wausau
Milwaukee
Annapolis
Fargo
Atlanta
Raleigh
Rockford
Tinley Park
Las Vegas
Twin Cities
Raleigh
Fort Wayne
Cincinnati
Buffalo
Long Island
Lancaster
Tampa
New Orleans

Madison
Tampa
Tinley Park
New Orleans
Detroit
Wausau
Tampa
Sugar Land
San Diego
Sugar Land
San Diego
Raleigh
Indianapolis
El Paso

George Links Foundation
Golisano Foundation
Grand Foundation
Greater Cincinnati Foundation-Emery Fund
Harri Hoffmann Family Foundation, Inc.
Health Foundation of Greater Massillon
High Foundation
J Cox Family Foundation
John and Alice Forester Charitable Trust
John William Pope Foundation
JTMF Foundation
Karpus Family Foundation, Inc.
Kelly Foundation
Kiwanis Club of Lake Bluff & Lake Forest
Knier Family Foundation
Lightning Hockey, LP
Louis John Piniella Foundation
Maureen & Paul Rubeli Foundation
Moline Regional Foundation
Morgan Creek Foundation
Morgan Stanley Gift
National Philanthropic Trust
Nevada Governor's Council on Developmental Disabilities
Northwestern Mutual Foundation
Oak Foundation
Oscar J. Tolmas Charitable Trust
Pine Rock Foundation
Rite Aid Foundation KidCents
Robert W. and Geraldine C. Simmer Fdn.
Ronald and Joyce Wanek Foundation
Ronald L. McDaniel Foundation
Sally Brown McClines Charitable Trust
Sandy Springs Society Inc
Saul P. and Nellie Z. Axelroad Charitable Foundation
Schoellerman Foundation
Schwab Charitable
Schwab Charitable/ DAFgiving 360
Scripps Howard Foundation
Stabler Foundation
Stack Family Foundation
Stephenson Family Gift Fund
Steven & Patricia Luebbert Fund
Suncoast Credit Union Foundation
Tennessee Disability Coalition
The Alben F. and Clara G. Bates Foundation
The Brett Boyer Foundation
The Charles Engelhard Foundation
The Christ Foundation
The Denver Foundation - Lowe Fund
The Dick's Sporting Goods Foundation
The Enright Family Fund
The Enright Family Fund
The Farash Foundation
The George Foundation
The Leroy Thom, Jean Thom and T-L Foundation Inc.
The McMahon Family Foundation
The Richard M. Schulze Family Foundation
The Taft Foundation
The Thomas and Agnes Carvel Foundation
The Village Club Foundation
The Wasily Family Foundation
Three Arches Foundation
Tioga Downs Regional Community Foundation
TQL Foundation Inc
Triangle Community Foundation
TruStage Foundation
Union Pacific Foundation
United Way of Broome County, Inc.
United Way of Southeast Louisiana
Weaver Family Private Foundation
Widen Family Foundation
Woravka Family Foundation

Long Island
Fort Myers
Deerfield
Cincinnati
Milwaukee
Canton
Lancaster
Fort Wayne
Wausau
Raleigh
Portland
Rochester
Sacramento
Deerfield
Raleigh
Tampa
Tampa
Las Vegas
Quad Cities
Raleigh
New York
Twin Cities

Las Vegas
Syracuse
Raleigh
New Orleans
Twin Cities
Westchester
Sugar Land
Madison
Tinley Park
Denver
Atlanta

Atlanta
Deerfield
Raleigh
Atlanta
Cincinnati
Lancaster
Tinley Park
Raleigh
Colorado Springs
Tampa
Nashville
Chicago
Nashville
Hillsborough
Canton
Denver
Wausau
Chicago
Deerfield
Rochester
Sugar Land

Houston
New York
Twin Cities
New York
Westchester
Detroit
New York
Cleveland
Southern Tier
Cincinnati
Raleigh
Madison
El Paso
Southern Tier
New Orleans
Orange County
Madison
Orange County

FRIENDS OF GIGI'S — CORPORATE PARTNERS

Friends of GiGi's Sponsors go above and beyond in their commitment to our life-changing services. Their investments in key programs and advocacy campaigns create direct, measurable impact for individuals with Down syndrome and their families.

ACCURATE PERSONNEL

For over 13 years, Accurate Personnel and the Migliore Family have supported GiGi's Playhouse through generous contributions totaling more than \$600,000. Their ongoing partnership, including support of the GiGiFIT Acceptance Challenge, has empowered families and fueled our mission nationwide.



CITY WIDE FACILITY SOLUTIONS

At their annual convention, City Wide Facility Solutions partnered with GiGi's Playhouse and supported the launch of a new location in Charleston, SC. Their efforts helped raise nearly \$600,000, expanding our mission to a new community in need.



COMPREHENSIVE MARKETING INC.

Since 2011, Comprehensive Marketing has supported GiGi's Playhouse through both generous giving and active advocacy. Their team continues to lead by example, promoting acceptance and inclusion through hands-on involvement and long-standing partnership.



FELLOWES BRANDS

For the past six years, Fellowes Brands and the Fellowes Family have supported GiGi's Playhouse through financial contributions and in-kind donations. Their partnership strengthens daily operations and helps expand national impact.



HACKATHON

As part of Microsoft's Global Hackathon 2024, Microsoft volunteers worked alongside our National Office staff, helping us leverage technology to better serve our families.

HYROX

HYROX America partnered with GiGi's Playhouse to champion inclusion in the fitness world, working together to raise awareness and promote acceptance of individuals with Down syndrome across the HYROX community.



SCHOOL SPECIALTY

Through their "BikED for EDucation" fundraiser, School Specialty contributed \$16,667 to GiGi's Playhouse, supporting educational programs and inclusive learning opportunities.

SUNBELT RENTALS

After partnering with our Long Island Playhouse in 2023, Sunbelt Rentals expanded their support nationally by sponsoring the GiGiFIT Program and the GiGiFIT Acceptance Challenge. Their partnership includes both financial support and employee volunteerism at Playhouses across the country.



WI-TRONIX

For over 12 years, Wi-Tronix and founder Larry Jordan have been steadfast supporters of GiGi's Playhouse. Their long-term commitment continues to fuel our mission and exemplify what it means to be a true partner in acceptance.



BOARD OF DIRECTORS



NANCY GIANNI
Founder and
Chief Belief Officer



CHRISTOPHER R. BEHRENS
Chief Executive Officer



TIM BOUNDY
Board President



ADAM EARL
Board Vice President



LESLIE WACHSMAN
Board Treasurer



STEVE BAKER
Board Member



DR. BLAKE BUTLER
Board Member



DAN PROFT
Board Member



JOHN SIMONE
Board Member



AUBREY SOUKUP
Board Member



JIM WISNIONSKI
Board Member



MICHAEL WOHLWEND
Board Member



TROY COWDREY
Retired Board Member



PAUL GIANNI
President Emeritus

We thank our outgoing board members and welcome new members joining in 2025! Together, their expertise and passion guide GiGi's Playhouse's strategic growth and ensure we remain true to our mission and values.



LOOKING AHEAD
New in 2025, Major Events, Ways to Get Involved

NEW IN 2025 — THE FUTURE IS BRIGHT

While we celebrate the accomplishments of 2024, we are already hard at work to make 2025 even more impactful. GiGi's Playhouse refuses to stand still — our families need us to keep innovating, reaching further, and dreaming bigger.

NEW PLAYHOUSE OPENINGS

Demand continues to grow, and we grow with it. In 2025, we're set to open our 62nd location: GiGi's Playhouse Charleston. We're also working to launch the startup Playhouses established in 2024, while forming new startup teams in additional cities, including: Augusta, GA; Chattahoochee Valley, AL/GA; North Jersey, NJ; Everett, WA; and Dallas, TX.

GIGI'S VOICE ON GLOBAL STAGE

In 2025, GiGi is speaking at the United Nations ahead of World Down Syndrome Day, sharing why individuals like her deserve to be celebrated from birth. She's also releasing a book for school-age children and continues to amplify the message of acceptance worldwide.

HARRY MOON BOOKS

We're partnering with Harry Moon Books to launch GiGi's Journey, a new addition to the beloved children's series featuring a main character with Down syndrome and a GiGi's Playhouse location. With over 1 million Harry Moon books already in print, this is an exciting opportunity to introduce the next generation of readers to GiGi's Playhouse.

MLB & GIGI'S PLAYHOUSE

In 2025, we're launching a nationwide tour bringing MLB teams and players to GiGi's Playhouse locations. Partnering with Texas Rangers player Jake Burger, his wife Ashlyn, and the Burger Family Foundation, this tour will boost visibility for the Down syndrome community and foster acceptance from ballpark to ballpark.

PROGRAM EXPANSION

In 2025, we are piloting a new STEM program for children, teens and adults. This cutting-edge program will integrate science, technology, engineering, and mathematics to help individuals with Down syndrome develop essential skills like problem-solving, creativity, and teamwork.

ADULT PROGRAMMING

We're reimagining and redesigning GiGi University to meet the evolving needs of adults with Down syndrome by offering inclusive, individualized pathways that go beyond job placement. The new GiGi University model includes tracks for career and volunteer development, a robust Ambassador leadership program, and a Lifelong Learner pathway for adults focused on continuous personal growth and skill development. No matter their pursuits, every adult is empowered to thrive with purpose and independence.

GROWTH OF THE GIGIFIT ACCEPTANCE CHALLENGE

The GiGiFIT Acceptance Challenge (GFAC) is bigger than ever in 2025. Our goal: to host a 5K fun run, 1-mile walk, or other fitness event in 90% of Playhouse communities and raise \$2.75 million through our collective efforts.

MAJOR EVENTS



Held across our network, the GiGiFIT Acceptance Challenge is a 5K fun run, 1-mile walk, or fitness event that brings communities together to celebrate acceptance and inclusion for individuals with Down syndrome. As our largest peer-to-peer fundraiser, it fuels the growth of free, life-changing programming at Playhouses nationwide.



Our 'i have a voice' Galas are powerful celebrations of achievement and inclusion. These events raise critical funds to sustain and expand free educational and therapeutic programs, while also giving our participants a platform to share their stories with their communities.



Our golf outings combine a day of play with a purpose, raising vital funds while promoting acceptance. These events bring communities and businesses together to drive lasting impact on and off the course.



2024 GIGI'S ANNUAL LEADERSHIP CONFERENCE

EDUCATE • INSPIRE • BELIEVE

Our National Leadership Conference unites over 350 attendees across the entire GiGi's Playhouse network to learn, collaborate, and reignite our shared passion for changing the world — together.

GET INVOLVED

At GiGi's Playhouse, our impact is only possible because of a caring community of supporters like you. There are many ways you can help us further our mission of acceptance and achievement.

DONATE

Your contribution, big or small, fuels life-changing programs like tutoring, therapy, and more. Consider a one-time gift, monthly donations, or explore non-traditional giving options.

PARTICIPATE IN EVENTS

Join us for signature events in 2025 — whether it's a GiGiFIT Acceptance Challenge, our National Gala, or a local Playhouse event. Your participation raises funds and shows your support.

VOLUNTEER

Give your time and talents to GiGi's! We have opportunities for all interests — whether tutoring, assisting with programs, or helping maintain Playhouse spaces.

PARTNER FOR IMPACT: CORPORATE ENGAGEMENT OPPORTUNITIES

Companies of all sizes can make a lasting difference by partnering with GiGi's Playhouse. From sponsorships and matching gifts to volunteer days and inclusive hiring, there are countless ways to get involved and champion acceptance in your workplace and beyond.



#GenerationG

is our human rights movement, for the next generation of change-makers stepping up to create a more accepting and inclusive world for those with disabilities! #GenerationG dismantles barriers of discrimination and strengthens our will to declare, in one voice, that we will not accept a world where anyone is valued less because of their physical and mental condition.

#GENERATIONG
IS THE GENERATION EVERYONE CAN BE A PART OF!

Find Out How: gigisplayhouse.org/generationg-community-page/

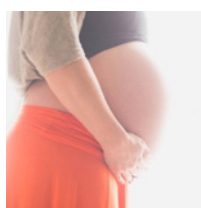


A LIFETIME OF BELIEF. A LIFETIME OF SUPPORT.

From prenatal diagnosis to career skills and beyond, GiGi's Playhouse makes a lifetime commitment to our families. No matter what. Our free, purposeful programs empower individuals with Down syndrome at every age.

And it's only possible because of you.

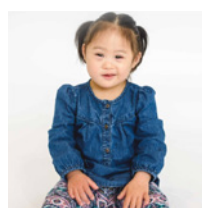
Thank you for believing in lifelong potential.



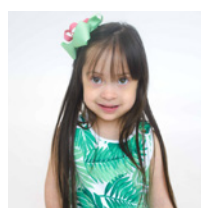
Prenatal



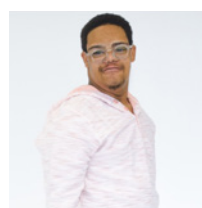
Infants



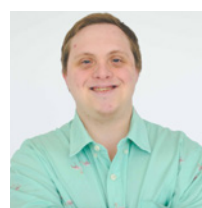
Toddlers



School Age



Teens



Adults

GiGi's Playhouse Headquarters
2350 West Higgins Road
Hoffman Estates, Illinois 60169
847-885-6149
gigisplayhouse.org



Down Syndrome Achievement Centers
educate. inspire. believe.